



The Art of our Community

You may have noticed the new art works in the heart of our community. The local regeneration project has taken a new turn with the unveiling of two pieces of public art, after the completion of the highly successful projects to green the Liverpool Road corridor and completely refurbish Irlam Station.

The first (above) is on the hoardings round the old petrol station at the bottom of Dudley Road which celebrates 200 years of the history of Irlam and Cadishead depicting agriculture on the Moss, the building of the Ship canal as well as the development of the railway all of which contributed to how the district is today.

The second (below) is a series of pictures on a building on the Lanstar site depicting the 'The Cadwallas at Home'.

The Cadwalla family lived in Irlam and Cadishead their whole lives. The Second World War brought them together but also kept them apart, Walter (the father and husband) by the Royal Navy and Mary (the wife and mother) with the WRENS (Womens Royal Naval Service).

The romance of Walter and Mary blossomed into marriage as Europe celebrated the end of the war. They then settled down into working life, Walter at the Steelworks and Mary at the Soap Works. As the austerity that the war brought eased, the birth of two sons Hamilton and Noel made the family complete.

The fifties ebbed and the Sixties rocked. Hamilton and Noel schooled locally and Walter and Mary enjoyed the rich social life the district had to offer.

The seventies and eighties rolled by, retirement beckoned and the children fled the nest. But, the house lives on and the happy memories of a lifetime in Irlam and Cadishead remain and continue with Hamilton, Noel and now their children.

Local Labour councillors continue to work with the Hamilton Davies Trust alongside officers from Salford City Council to continue this ground-breaking work which helps to make such a difference to the area. The Regeneration Working group, which involves all partners, meets regularly to co-ordinate this work and reports on progress to the bi-monthly meetings of the Community Committee.

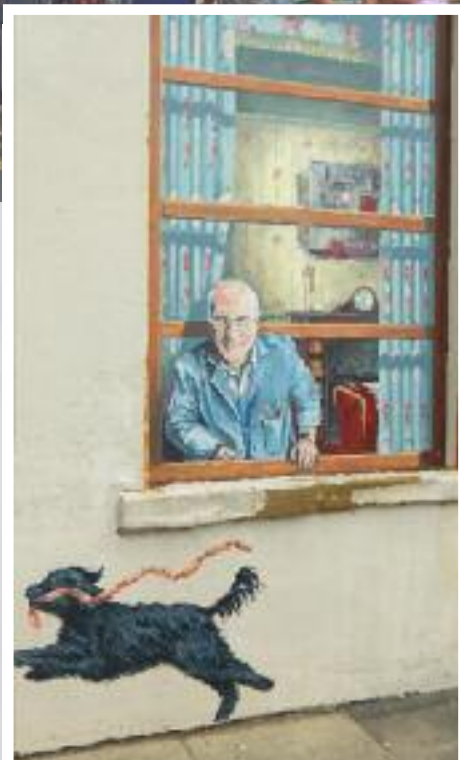


A brighter future for our college

It is essential that Irlam and Cadishead College provides a good standard of education for all the pupils as soon as humanly possible and that everyone in the area helps to make this possible.

After another set of disappointing exam results it is important that both the Labour Party and indeed the whole community give our unqualified support to the new permanent Headteacher, Maria Nightingale. She has a long and highly successful track record of improving schools in other parts of the country. Although improvement does take time - we will continue to give our full support to her and her new leadership team.

Our representatives on the governing body will continue to play a full part in supporting and challenging the head and the staff to ensure that satisfactory progress is made.



Labour Leader Jeremy Corbyn On your side

The Tories are in power for a further 5 years.

They have pledged to cut further and faster than they did in the last five years

We will see:

- Local health services under threat as never before.
- Services for the elderly facing Tory cutbacks and closures.
- Schools struggle to provide our children with a decent education.
- This Tory government is planning on cutting jobs and vital services like the police.



Health are we getting better?



In February 2015 a Memorandum of Understanding was signed by NHS England, the ten Greater Manchester Councils, including Salford, and the Greater Manchester Clinical Commissioning Groups (CCGs), NHS and Foundation Trusts to devolve health and social care. This allows us to take control of a £6 billion budget covering acute care, primary care, community services, mental health services, social care and public health.

What will the Devolution of health and social care to GM allow us to do?

- Improve the health and well being of all of GM residents from early age to older people, recognising that this will only be achieved with a focus on the prevention of ill health and the promotion of well being
- Move from having some of the worst health outcomes to having some of the best.
- Close the health inequalities gaps faster

What WONT change because of devolution?

- The NHS will still be responsible for keeping people safe and delivering the NHS Mandate and Constitution to all our residents.
- There will be no new layer of government and resources will not be taken away from the front line to support this.
- CCGs and Councils will keep their existing accountabilities, legal obligations and funding
- There will be no requirements for NHS reorganisation.

What WILL change because of devolution?

- We will be fully involved in decisions which affect us and from April 2016 we will take those decisions locally.
- We will work together in new ways to tackle some of the major health, housing, work and other challenges we face in our region.

What will we be looking at?

- Joining up health and social care services to make life easier for residents
- Helping people stay as well and independent as they can by offering them the advice and treatment they need in the community rather than hospital.
- Helping people see or talk to a GP easily, at a time and place that suits them.
- Easing pressure on hospitals by making sure only people who really need to be seen in a hospital go there
- Developing new Dementia services and expertise, including a National Institute for Dementia.
- Improving hospital care and general surgery under 'Healthier Together'
- Doing more to help people whose mental ill-health is making it difficult for them to work

Tories scrap target for raising children out of poverty

The Tories plan to remove the official measure of child poverty. The relative poverty measure, enshrined in the Child Poverty Act passed by Labour in 2010, required the Government to eradicate child poverty by 2020. The act defines a child as being in poverty if it is in a household with less than 60% of the national median average income.

Instead, the government will define poverty not in terms of money, but by measuring the number of workless households and educational attainment of children.

It will leave the UK as the only OECD (Organisation for Economic Co-operation and Development) country not to use the 'relative indicator', which is the internationally accepted measure of poverty.

Ian Stewart, Salford City Mayor, said "Poverty is fundamentally about a lack of money and therefore this is what we should continue to measure. Locally it will be important that we continue to monitor indicators which include in-work poverty as we know this is an increasing issue and that the majority of welfare benefits in GM are paid to people who are in work".

Salford born Comedian Jason Manford took to facebook to slam David Cameron for 'changing the definition of child poverty' in a bid to wipe it out. He mocked the Prime Minister on Facebook, writing: "Can't believe David Cameron has wiped out Child Poverty in the UK. What a legend.

"Simply by changing the meaning of what we understand to be 'poverty'. Genius. So glad the country voted him in. Nice one. Chuffed to bits." He received over 80,000 likes!!!



photo by D Sharon Pruitt

City of Salford Community Stadium

The City of Salford Community Stadium (A J Bell Stadium) is a great asset to our city. It was built in 2011 to kick-start the regeneration of an area in Barton, now known as City Gateway.

The sale of the surrounding land will more than repay the loans taken by the Stadium Company from the council and, as a young and rapidly developing business, will continue to bring in profits for the future.

Alongside the two sporting tenants, Salford Red Devils and Sale Sharks, there is a fast growing events and conferencing business. Last year, over 33,000 people attended the Stadium for such events with a major concert also being planned for 2016.

The Stadium's development strategy for the land will provide new jobs for several thousand people and transport for the area will benefit from a bypass and tram line to come.

The exciting developments in discussion include advanced negotiations for small food retail and approximately one hectare for motor retail and fast food. The prime site of approximately 4 hectares is likely to be developed by a household name bulky goods retailer.

This development is putting Salford on the map and paying back in dividends.



SALFORD COUNCIL DEMANDS ACTION ON PLANNING OBLIGATIONS

Tory planning policy means millions of pounds of money that should go into creating good places to live – including affordable homes - is going into profits for the development industry, says Salford Labour.

Salford backs new development which brings new homes, jobs and help for public finances. But new development should not add extra pressure to local communities.

So new development should, under policies adopted by Salford's Labour council, pay for the extra school places, more play space and affordable homes.

Good developers include many of these things in their plans. But too many are now taking advantage of new Tory rules.

These say that where a development is not making enough profit, local policies to make developers pay should be ignored.

And when you calculate 'enough profit' according to Tory rules it turns out to be about 17%.

Labour's planning spokesperson Councillor Derek Antrobus said: "We want developers to make a profit because we want them to build homes and provide jobs in Salford.

"But the profit levels that can be guaranteed by following Tory guidelines are joke. Often it's banks and landowners rather than the developers themselves who are taking an unfair cut. But this is all at the expense of investing in good places."

Salford Labour's approach has been backed by the Town and Country Planning Association which says the majority of councils have their hands tied.

Councillor Antrobus added: "We have written in protest to the Minister but all we have received is a wishy-washy response saying that development has to be viable."

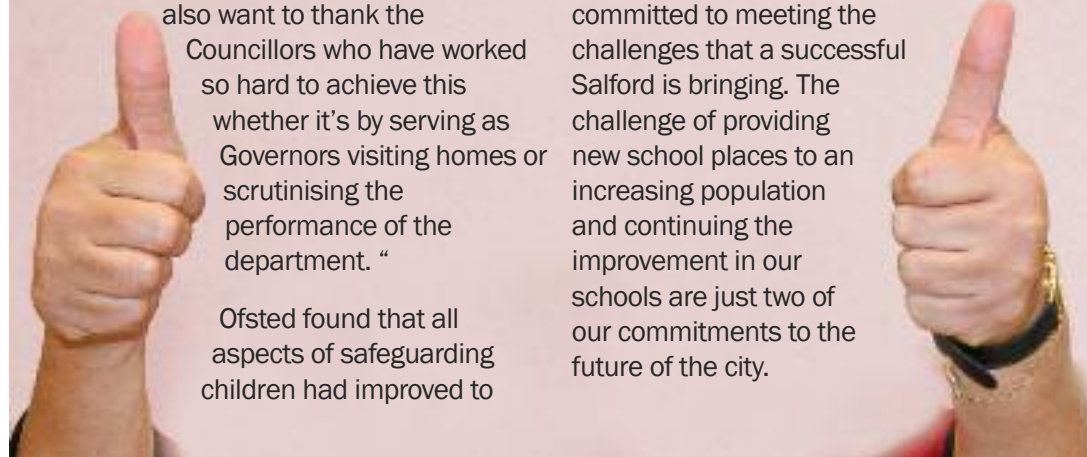
CHILDRENS SERVICES GOOD AND IMPROVING

It is good news all round in Children Services. Ofsted have named Labour run Salford as one of just a handful of local authorities whose safeguarding services are ranked as "good" whilst Schools have seen a 2% increase in children gaining 5 or more GCSE passes including English and Maths.

Salford's assistant Mayor John Merry said: "I congratulate all involved in this including Teachers officers and the Children who achieved such good results but I also want to thank the Councillors who have worked so hard to achieve this whether it's by serving as Governors visiting homes or scrutinising the performance of the department. "

Ofsted found that all aspects of safeguarding children had improved to

good but were particularly impressed with the services provide to looked after children and the support provided to hard pressed families. Labour is committed to meeting the challenges that a successful Salford is bringing. The challenge of providing new school places to an increasing population and continuing the improvement in our schools are just two of our commitments to the future of the city.



Tory Budget blow Spells End of Social Housing

Tory government picks up Thatcher's war against affordable rented homes

Whilst social housing tenants celebrated the budget announcement that social rents would decrease annually by 1% for the next four years and that the right to buy your social home would be extended to all housing association tenants.

In reality the long-term implications for social tenants and their families is rather bleak, heralding the end of affordable rented housing as we know it as Osborne returns to the 1980 Thatcher policies that sold off thousands of social homes.

Given that two thirds of social tenants claim

housing benefit the rent reduction is in fact a welfare cut, saving the DWP millions but costing the housing providers on average £28m from their business plans over the next 4 years that would have been invested in new housing. The Housing Federation estimates that some 27,000 new homes will now not be built to help replace those lost to Right to Buy sales.

Better off tenants, hit by a steep rise in rent are already concluding that it will be cheaper to buy their home than continue to rent and it now looks likely that the government subsidy on which social landlords have depended to build new

homes will only be provided through shared ownership schemes. Already we are seeing Housing Associations returning to planners to change their new schemes from homes to rent to homes to buy with shared ownership.

In addition, with far fewer rented homes available, social tenants will no longer enjoy the security of tenure for life but have a time-limited tenancy.

Ultimately, then, Salford families, driven to the over-priced private rented sector will have nothing to celebrate at all.



The Untold Implications of George Osborne's 'Living' Wage

Anything that can be done to genuinely lift workers out of poverty-pay should be welcomed! Within Salford & Greater Manchester we have real challenges with low pay and Salford Labour Party are fully committed to working towards Salford becoming a Living Wage City!

The Living Wage is set annually by the Living Wage Foundation (LWF) and currently stands at £9.15 per hour for London & £7.85 per hour outside of London.

George Osborne's new 'Living' Wage of £7.20 per hour (for 25s and over) announced in July's emergency budget clearly undermines the work of the LWF and those progressive organisations that have become accredited Living Wage employers. Osborne plan also proposes to raise his 'Living' Wage to £9.00 per hour by 2020, which is currently less than the London living wage.

More importantly, what is lost in Osborne's low pay headline grabbing politics are the impacts of the proposals on our 2 million under-25 year olds, ineligible for this level of pay and expected to struggle to make-ends-meet on the national minimum wage. Similarly, Osborne's cuts to tax credits and other in-work benefits will hit working families the hardest, with the Institute of Fiscal Studies stating:

"Among the 8.4 million working age households who are currently eligible for benefits or tax credits who do contain someone in paid work the average loss from the cuts to benefits and tax credits is £750 per year,"

Salford Labour Party believe that any developments to genuinely lift workers out of poverty-pay should be welcomed but it's clear that the Chancellor favours sound-bite politics over a genuine commitment to tackling low-pay and its consequences within our communities.



City West

The housing provider City West have appointed a new head for the area, Jill Fenton, with whom the councillors will be meeting on a regular basis. Two neighbourhood officers remain in the area – Johnathan Holder and Amanda Coles. Councillors regularly support tenants groups when invited and available. One of our Councillors, John Walsh, sits on the City West board.

If any tenants have any issues please contact any of the councillors who will do their best to advise and represent your views to City West.

City West are providing some social housing Dixon Street and councillors have worked with residents to mitigate the worst effects of this development.



Your local councillors have recently attended the first meeting of the Port Salford liaison group. The second meeting has been arranged for October. The erection of the first warehouse continues apace – but we have had no further notifications of any other warehouse developments.

We await notification of when the road network will be complete.

If anyone has any issues about the developments please contact any of your local councillors and we will contact the relevant parties.



Stand with us against green belt development

We, your Labour councillors in Irlam & Cadishead are proud to have, so far, managed to prevent any major housing developments on Chat Moss. The Moss is all designated as green belt land and lies mostly in Salford.

We fully recognise that new housing is urgently needed in our City and across the UK. In fact, Salford City Council has approved more house building over the last two years than any other local authority in Greater Manchester, so we are certainly doing the best we can in difficult circumstances.

What we face over the next five years is a determination by landowners and developers to build on green belt land

- there are already several local proposals that we are aware of:

- Land at Astley Road, Irlam. - approx 350 houses
- Land at Springfield Lane, Irlam - over 550 houses
- Land at Boysnope Golf Club - approx 1,400 houses proposed by Peel

Our green spaces are important for the quality of life in our community. We are determined that brownfield sites should be used in the first instance. With your continued support your local Labour Party will continue to oppose these proposed housing developments.



Your Local councillors John Walsh, left, and Tracy Kelly, third from right, joined forces with other Salford Labour councillors and supporters to spread the word.

If you would like to join the Labour Party please go to <https://join.labour.org.uk>

Published and promoted on behalf of Salford Labour Party all at 222 Barton Lane, Eccles M30 0HJ. Printed by Greatledge, Malage House, Pink Bank Lane, M12 5GH.

Your councillors for Irlam



Councillor Roger Jones
0161 775 1261
councillor.jones@salford.gov.uk



Councillor Peter Taylor
0161 775 7821
councillor.taylor@salford.gov.uk



Councillor Tracy Kelly
0161 775 1874
councillor.kelly@salford.gov.uk

Your councillors for Cadishead



Cllr Christine Hudson
0161 775 4378
councillor.hudson@salford.gov.uk



Councillor Jimmy Hunt
0161 775 9859
councillor.hunt@salford.gov.uk



Councillor John Walsh
0161 775 1358
councillor.walsh@salford.gov.uk